

Mailing Address:
 PO Box 404, Bungalow, QLD 4870

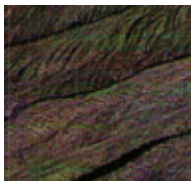
Cairns Warehouse:
 25 Supply Road, Bentley Park, QLD 4869

TURF REINFORCEMENT MATS

The primary function of a TRM is to provide permanent (root or stem) reinforcement for the mature vegetation during higher hydraulic flow events where velocities and shear stresses exceed the limits of mature, natural vegetation. A secondary and more temporary function is to collect sediment during the hydraulic flows prior to and while vegetation is being established. The TRM performance increases as the vegetation becomes established and the root structure is entangled within the synthetic mat.

PRODUCT	DESCRIPTION	APPLICATION	FLOW RATE Maximum flow velocity limit
TERRAMAT 3D	Polypropylene multi Layered 3 dimensional matting	Moderate Flow Channels Steepened Slopes	4 m/s
LANDOK 450	450 - Polypropylene fibres stitch bonded between two biaxial nets	Moderate Flow Channels Steepened Slopes	5.5m/sec
	300 - Polypropylene Fibres woven into a three dimensional matrix	Moderate to High Flow Channels High loading Steep Slopes	6.1m/sec
PYRAMAT	Polypropylene Fibres woven into a three dimensional matrix	High Flow Channels Extreme Slopes Pipe Inlets & Outlets	7.6m/sec
ARMOURMAX	Engineered system consisting of Pyramat layer and Soil percussion anchors	High Flow Channels Stream, River Embankments Shallow Plane Slips on Steep Slopes	7.6m/sec
STAYTURF	Soil free turf grown reinforced with Organic matting and stabilising mesh	High Flow Channels	3.3 m/s
ANCHORING PINS Recommend 1/sqm interval	Short Pins – 150mm x 150mm <i>Mild Steel / Stainless Steel</i>	Hard Ground	
	Long Pins – 300mm x 150mm <i>Mild Steel</i>	Soft Ground	

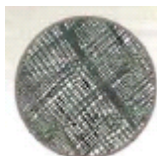
TERRAMAT 3D



LANDLOCK 450



LANDLOK 300



PYRAMAT



ARMOURMAX



ANCHORING PINS

